



PowerFLEX™ BIPV - 250/275/300W

The Most Powerful Rooftops on the Planet

Designed specially for rooftops

Integrates with roofing surface

- No mounting hardware
- No roof penetrations
- No wind load

Flexible module

- Fits many roof types
- Durable, non-breakable

Light weight

- 3.5 kg/m² (0.7 lb/ft²) with adhesive
- No structural reinforcement required



More energy per roof

High efficiency CIGS

- 10.5% to 12.6% aperture efficiency
- 50% more efficient than flexible a-Si

High performance

- Performs in all light conditions
- Shade tolerant

Covers entire roof area

- Lays flat. No tilt required
- Minimum module spacing required

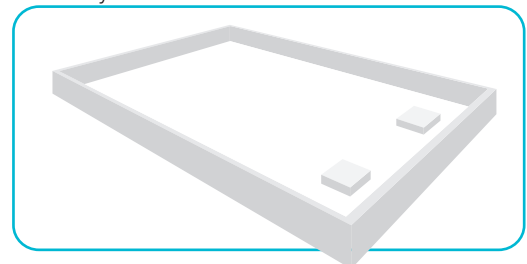
Lower installed system costs

Large format module

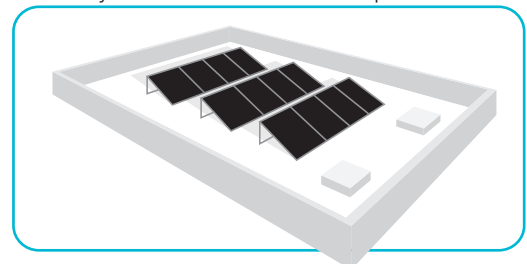
- 250-300 Watts
- 5.75m x 0.49m dimensions
- 30% to 40% savings in BOS & installation costs

More power per roof with lower BOS & installation costs

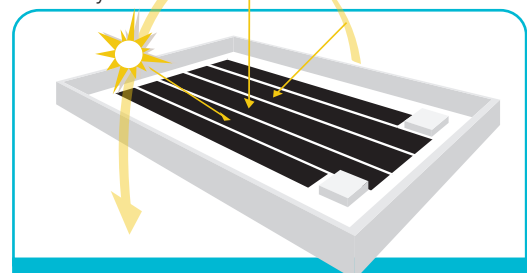
This is your roof



This is your roof with tilted solar panels

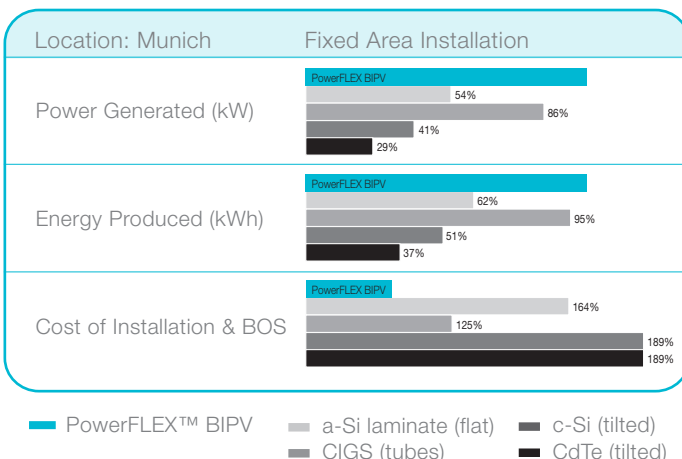


This is your roof with PowerFlex™ BIPV



More surface area covered plus higher performance equals more power to you

How PowerFLEX™ BIPV compares



Electrical Specifications*

Capacity rating	Pmax	300 W	275 W	250 W
Tolerance of Pmax	%	± 7%	± 7%	± 7%
Module aperture area efficiency	%	12.6%	11.5%	10.5%
Rated voltage	Vmpp	53.9 V	50.3 V	46.5 V
Rated current	Impp	5.6 A	5.5 A	5.4 A
Open circuit voltage	Voc	71.2 V	68.4 V	65.7 V
Short circuit current	Isc	6.4 A	6.3 A	6.2 A

*Measured at (STC) Standard Test Conditions: 25°C, 1 kW/m² insolation, AM 1.5

Temperature Coefficients

Maximum power	-0.43%/°C
Voltage at Maximum Power	-0.38%/°C
Open circuit voltage	-0.33%/°C
Short circuit current	-0.03%/°C

Mechanical Specifications

Dimensions	5745 x 495 x 3 mm (226 x 19.3 x 0.12 in)
Weight	9.9 kg (nominal weight with adhesive) 3.5 kg/m² (0.7 lb/ft²) with adhesive
Junction Box	Junction box with bypass diode
Cables	Tyco Solarlok
Front Sheet	Non-stick ETFE
Solar Cells	108 CIGS cells (210 x 100 mm)
Frame	None

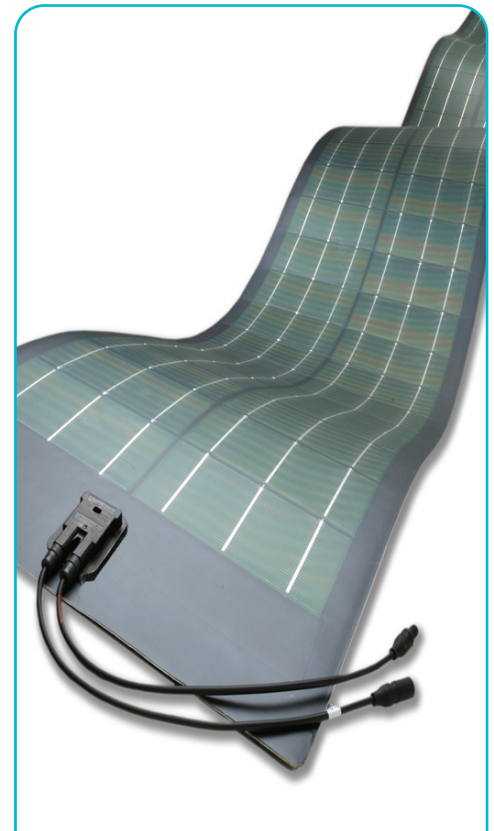
Operating Conditions

Temperature Range	-40°C to + 85°C
Maximum System Voltage	1000 V

Certifications and Warranty*

UL 1703, IEC 61646 / 61730
Materials and workmanship - 5 years
Power output - 25 years (90% @ 10 yrs; 80% @ 25 yrs)

*Contact GSE for complete warranty terms



Also available in 2.0m x 0.5m modules

Global Solar® is a leading manufacturer of Copper Indium Gallium diSelenide (CIGS) thin-film solar on a flexible substrate. With plants in Tucson (Arizona, USA) and Berlin (Germany), Global Solar® operates with a total of 75MW of production capacity. An average cell efficiency above 11% makes the company the world leader in CIGS efficiency on flexible substrate in large scale production. Global Solar® has set several records for CIGS cell efficiency above 15%. Global Solar's® high efficiency material is sold to customers worldwide in multiple applications, including flexible laminates, solar shingles, glass modules and portable chargers.

Call Global Solar® to find out if PowerFLEX™ BIPV is right for you.



Global Solar® Energy, Inc.
 8500 South Rita Road
 Tucson, Arizona, 85747, USA
 Phone: +1 (520) 546-6313
 Fax: +1 (520) 546-6318
 info@globalsolar.com
 www.globalsolar.com

Global Solar® Energy Deutschland GmbH
 Am Studio 16
 12489 Berlin, Germany
 Phone: +49 (30) 81879-9200
 Fax: +49 (30) 81879-9222
 info@de.globalsolar.com
 www.globalsolar.com